

LIGHTALK 2 (LA-60013)



Product description

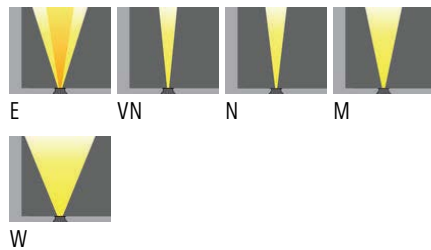
With recessing box - With driver
 Constant current (CC) 500 mA - 655 mm
 Class I - RGBW



Luminaire structure

- Die-cast aluminium housing
- Extruded aluminium housing
- Pre-treated before powder coating ensuring high corrosion resistance
- Stainless steel frame on request
- Four IP68 connectors supplied with 2x0.2 m of 3x1.0 sqmm outdoor cable and 2x0.2 m of 2x0.5 sqmm outdoor shielded cable for LA-60013
- Stainless steel fasteners in grade 304 with zinc flake coating (ZFC)
- Durable silicone rubber gasket
- Clear toughened glass
- Integral control gear
- Recessing box is included
- Suitable for walk-over with a maximum load of 500 kg

Light symbol



Product colour



Technical information

Light source	20 LED
Light source type	LED
Dimming type	DMX, DMX/RDM
Material	Stainless Steel
Weight	4.9 kg
Operating temperature	-20°C to 40°C

Luminaire	
Power	33 W
Lumen	1592 - 1916 lm
Efficacy	48 - 58 lm/W
CCT / CRI	RGBW30, RGBW40
Drive current	500 mA
Driver option	Integral control gear
Driver	Constant current (CC)
Input voltage	220-240 V 50/60 Hz

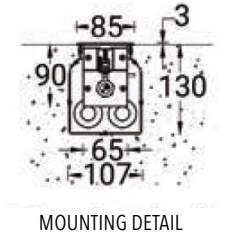
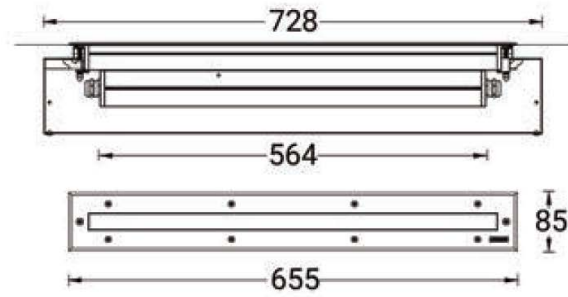
Optic	E [16°x 35°], VN [10°], N [13°] M [24°], W [43°]
Bug	B0-U5-G0
ULR	100%
ULOR	100%

LIGHTALK 1 (LA-60013)

Product variants

HOW TO SPECIFY

LIGA	-	LA-60013	-	500	-	M	-	RGBW30	-	DMX/RDM	-	00
MODEL	OUTPUT	DISTRIBUTION	CRI/CCT	DIMMING	COLOUR FINISH							
LA-60013	500.33W	E	RGBW30	DMX	00 STAINLESS STEEL							
		VN	RGBW40	DMX/RDM								
		N										
		M										
		W										



MOUNTING DETAIL