

**PALETTA 5 (PA-31942)**

**Product description**

355x355 mm


**Luminaire structure**

- Die-cast aluminium housing and frame
- Pre-treated before powder coating ensuring high corrosion resistance
- Two cable entries for through wiring
- Stainless steel fasteners in grade 304 with zinc flake coating (ZFC)
- Durable silicone rubber gasket
- Opal UV-stabilised polycarbonate diffuser
- Integral control gear
- Optional surface mounting box for easy wiring or conduit connection when wiring from behind is not possible

**Light symbol**

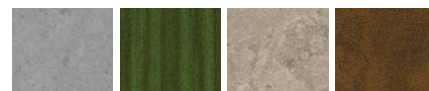

0

**Product colour**


01- Black (RAL 9011)    02- Dark Grey (RAL 7043)    03- White (RAL 9003)    05- Matt Silver (RAL 9006)



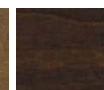
06- Bronze (RAL 6014)

**Special finishes upon request**


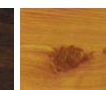
SU01- Concrete Urban    SU02- Softscape Urban    SU03- Stone Urban    SU04- Corten Urban



SW01- OAK Woodland



SW02- Walnut Woodland



SW03- PINE Woodland

**Technical information**

Light source	96 LED
Light source type	LED
Dimming type	DALI, On/Off
Material	Aluminium
Weight	4.8 kg
Operating temperature	-20°C to 40°C

<b>Luminaire</b>	
Power	27 W
Lumen	2362 - 2486 lm
Efficacy	87 - 92 lm/W
CCT / CRI	3000K CRI80, 4000K CRI80
Drive current	700 mA
Driver option	Integral control gear
Driver	Constant current (CC)
Input voltage	220-240 V 50/60 Hz

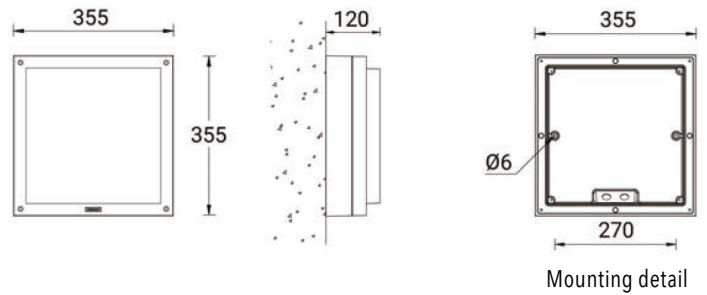
Optic	0 [129°x129°]
Bug	B1-U2-G1
ULR	6%
ULOR	6%
CIE flux code n°3	92
MacAdam Ellipse	3 SDCM
Lifetime L90B10 (hrs)	15,000
Lifetime L80B10 (hrs)	30,000
Lifetime L80B50 (hrs)	34,000

PALETTA 5 (PA-31942)

Product variants

HOW TO SPECIFY

LIGA	- PA-31942	- 700	- 8030	- ND	- 01
	<b>MODEL</b>	<b>OUTPUT</b>	<b>CRI/CCT</b>	<b>DIMMING</b>	<b>COLOUR FINISH</b>
	PA-31942	700 27W	8030	ND	01 BLACK
			8040	DALI	02 DARK GREY
					03 WHITE
					05 MATT SILVER
					06 BRONZE
					S - SPECIAL FINISH



Accessories



Surface mounting box for easy cabling (PALETTA 5)  
LIGA-SCE-PALETTA-5