



## Product description

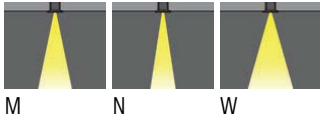
With remote driver / remote IP box - Round  
Stainless Steel frame



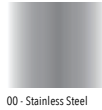
## Luminaire structure

- Die-cast aluminium housing
- Pre-treated before powder coating ensuring high corrosion resistance
- 6mm thick front ring in stainless steel
- Single cable entry
- Stainless steel fasteners in grade 304 with zinc flake coating (ZFC)
- Durable silicone rubber gasket
- Clear toughened glass
- Remote driver (included)
- Remote box IP-rated is included for NIKON 1

## Light symbol



## Product colour



00 - Stainless Steel

## Technical information

Light source	7 LED
Light source type	LED
Dimming type	DALI, On/Off
Material	Stainless Steel
Weight	0.7 kg
Operating temperature	-20°C to 40°C

Luminaire	
Power	13 W
Lumen	888 - 1045 lm
Efficacy	68 - 80 lm/W
CCT / CRI	3000K CRI80, 4000K CRI80
Drive current	500 mA
Driver option	Integral control gear
Driver	Constant current (CC)
Input voltage	220-240 V 50/60 Hz

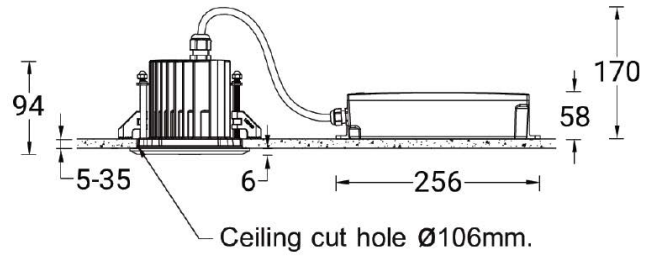
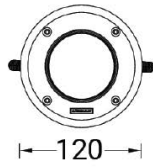
Optic	M [28°], N [18°], W [39°]
Bug	B1-U0-G0
ULR	0%
ULOR	0%
CIE flux code n°3	100
MacAdam Ellipse	3 SDCM
Lifetime L90B10 (hrs)	120,000
Lifetime L80B10 (hrs)	120,000
Lifetime L80B50 (hrs)	120,000

NIKON 1 (NI-80501-S)

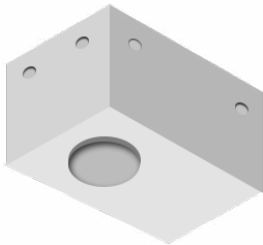
Product variants

HOW TO SPECIFY

LIGA	-	NI-80501-S	-	500	-	M	-	8030	-	ND	-	00
		<b>MODEL</b>		<b>OUTPUT</b>		<b>DISTRIBUTION</b>		<b>CRI/CCT</b>		<b>DIMMING</b>		<b>COLOUR FINISH</b>
		NI-80501-S		500 13W		M		8030		ND		00 STAINLESS STEEL
						N		8040		DALI		
						W						



Accessories



Concrete box modification upon request  
LIGA-CONCRETE-BOX