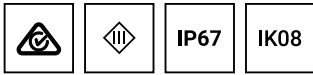


LIGHTALK 14 (LA-30033)



Product description

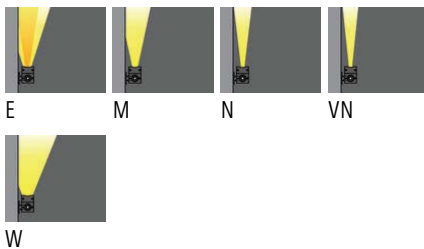
Without remote driver - Constant voltage (CV)
24 V - 610 mm - Class III



Luminaire structure

- Die-cast aluminium end-caps
- Extruded aluminium housing and sheet aluminium front frame
- Pre-treated before powder coating ensuring high corrosion resistance
- Two IP68 connectors supplied with 2x0.2 m of 2x1.0 sqmm outdoor cable for LA-30033
- Stainless steel fasteners in grade 304 with zinc flake coating (ZFC)
- Durable silicone rubber gasket
- Clear toughened glass
- Remote driver for constant voltage (CV) not included

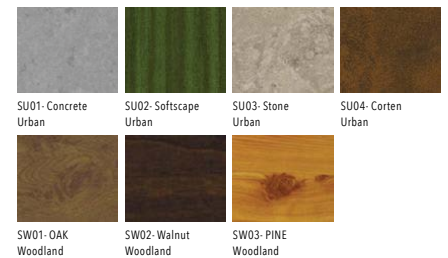
Light symbol



Product colour



Special finishes upon request



Technical information

Light source	18 LED
Light source type	LED
Dimming type	On/Off
Material	Aluminium
Weight	2.6 kg
Operating temperature	-20°C to 40°C

Luminaire	
Power	28 W
Lumen	2335 - 2886 lm
Efficacy	93 - 115 lm/W
CCT / CRI	3000K CRI80, 4000K CRI80
Drive current	24 VDC
Driver option	Remote driver for constant voltage (CV) not included
Driver	Constant voltage (CV) 24V
Input voltage	24 VDC

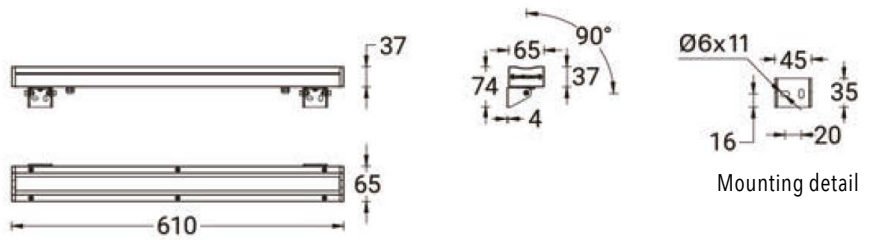
Optic	E [22° x 36°], M [27°], N [15°], VN [13°], W [44°]
Bug	B3-U1-G0, B2-U1-G0
ULR	0%
ULOR	0%
CIE flux code n°3	100

LIGHTALK 14 (LA-30033)

Product variants

HOW TO SPECIFY

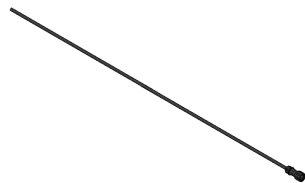
LIGA	-	LA-30035	-	28	-	VN	-	8030	-	ND	-	01
MODEL	OUTPUT	DISTRIBUTION	CRI/CCT	DIMMING	COLOUR FINISH							
LA-30035	28W	E	8030	ND	01 BLACK							
		M	8040		02 DARK GREY							
		N			03 WHITE							
		VN			05 MATT SILVER							
		W			06 BRONZE							
					S - SPECIAL FINISH							



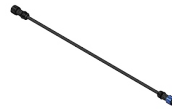
Accessories



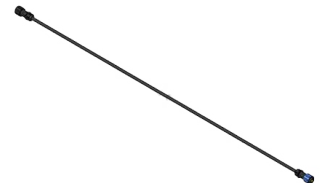
Cable - Connector IP67 Female
2 Pin Power - 1000 mm
LIGA-A65491-001



Cable - Connector IP67 Female
2 Pin Power - 5000 mm
LIGA-A65491-005



Cable - Connector IP67 Female
+ Male 2 Pin Power - 1000 mm
LIGA-A65591-001



Cable - Connector IP67 Female
+ Male 2 Pin Power - 5000 mm
LIGA-A65591-005



Connector IP67 Female
2 Pin Power
LIGA-A68191



Connector IP67 Male
2 Pin Power
LIGA-A68291



End cap - Connector IP67 Female
2 Pin and 3 Pin Power
LIGA-A67991



End cap - Connector IP67 Male
2 Pin and 3 Pin Power
LIGA-A68091



300 mm extend arm mounting
LIGA-A31091



450 mm extend arm mounting
LIGA-A31191



75 mm extend arm mounting
LIGA-A30891



150 mm extend arm mounting
LIGA-A30991