

PALETTA 4 (PA-31951)



Product description

345x190 mm



Luminaire structure

- Die-cast aluminium housing and frame
- Pre-treated before powder coating ensuring high corrosion resistance
- Two cable entries for through wiring
- Stainless steel fasteners in grade 304 with zinc flake coating (ZFC)
- Durable silicone rubber gasket
- Opal UV-stabilised polycarbonate diffuser
- Integral control gear
- Optional surface mounting box for easy wiring or conduit connection when wiring from behind is not possible

Light symbol



0

Product colour

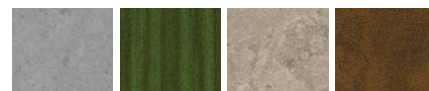


01- Black (RAL 9011) 02- Dark Grey (RAL 7043) 03- White (RAL 9003) 05- Matt Silver (RAL 9006)



06- Bronze (RAL 6014)

Special finishes upon request



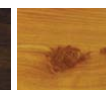
SU01- Concrete Urban SU02- Softscape Urban SU03- Stone Urban SU04- Corten Urban



SW01- OAK Woodland



SW02- Walnut Woodland



SW03- PINE Woodland

Technical information

Light source	96 LED
Light source type	LED
Dimming type	DALI, On/Off
Material	Aluminium
Weight	3.1 kg
Operating temperature	-20°C to 40°C

Luminaire	
Power	15 W
Lumen	1433 - 1508 lm
Efficacy	96 - 101 lm/W
CCT / CRI	3000K CRI80, 4000K CRI80
Drive current	400 mA
Driver option	Integral control gear
Driver	Constant current (CC)
Input voltage	220-240 V 50/60 Hz

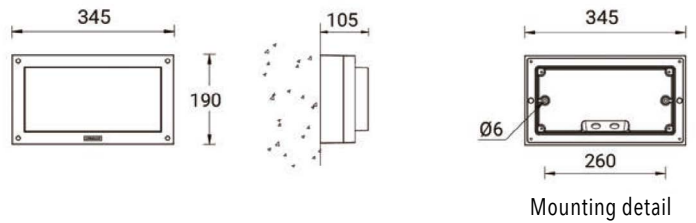
Optic	0 [134°x123°]
Bug	B0-U2-G1
ULR	11%
ULOR	11%
CIE flux code n°3	88
MacAdam Ellipse	3 SDCM
Lifetime L90B10 (hrs)	15,000
Lifetime L80B10 (hrs)	30,000
Lifetime L80B50 (hrs)	34,000

PALETTA 4 (PA-31951)

Product variants

HOW TO SPECIFY

LIGA	- PA-31951	- 400	- 8030	- ND	- 01
	MODEL	OUTPUT	CRI/CCT	DIMMING	COLOUR FINISH
	PA-31951	400 15W	8030	ND	01 BLACK
			8040	DALI	02 DARK GREY
					03 WHITE
					05 MATT SILVER
					06 BRONZE
					S - SPECIAL FINISH



Accessories



Surface mounting box for easy cabling (PALETTA 4)
LIGA-SCE-PALETTA-4